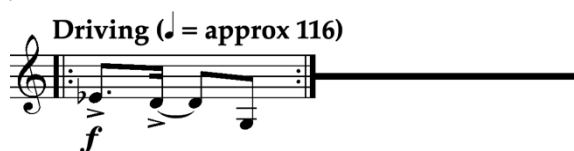


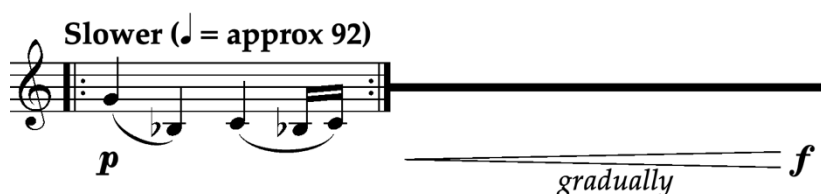
## Section 1: (First Player)

In this section, players are instructed to play specific cells when the person directly before/after them has started to play it. This does not need to happen immediately, and players are free to leave a little bit of time (no more than about 6 seconds) after the neighbouring player has changed cell before doing so themselves.

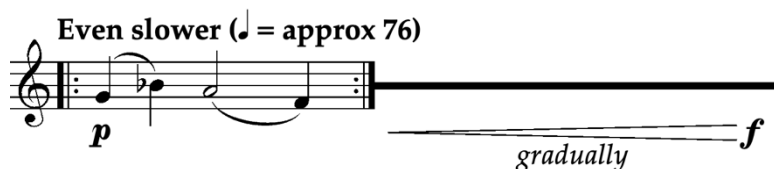
a) Repeat the following cell and keep doing so while the rest of the ensemble join.



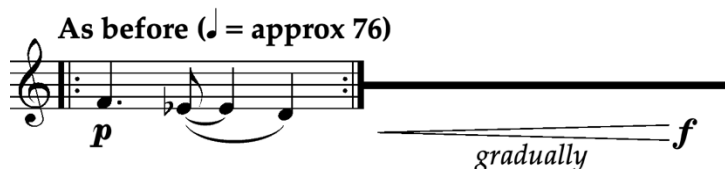
b) Once the entire ensemble is playing, at any point of your choosing, start repeating the following cell, and continue doing so while the rest of the ensemble join you one by one. Begin at *p* and gradually *crescendo* to *f*, ensuring that you have arrived at *f* before the new cell has reached the last player in the ensemble.



c) This process will now repeat, starting from the last player and moving in reverse order. Continue to repeat your current cell until the player directly behind you in the order has started to play the new gesture. At this point, repeat the following gesture in unison, beginning at *p* and making a gradual *crescendo* to *f*.



d) Once you have arrived at *f*, at any point of your choosing, repeat step b using the following gesture.



e) Repeat step c, using the following as your new gesture.

